

Arca ASSEMBLY

2 | F

ASSEMBLY L

5,400 sq. ft / 503 sqm.
Capacity info
 Banquet: 264 guests
 Theater: 675 guests
 Classroom: 360 guests
 Reception: 520 guests



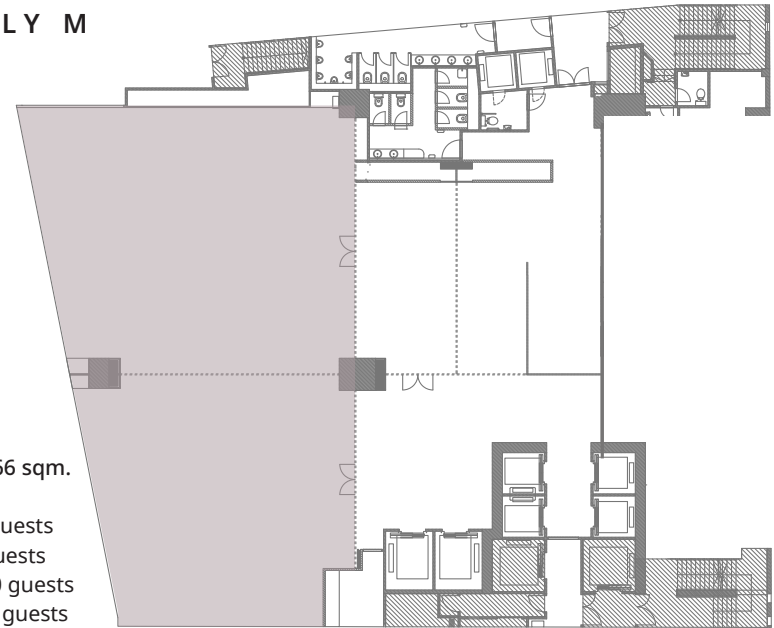
ASSEMBLY B

3,700 sq. ft / 345 sqm.
Capacity info
 Banquet: 144 guests
 Theater: 475 guests
 Reception: 430 guests



ASSEMBLY M

3,900 sq. ft / 366 sqm.
Capacity info
 Banquet: 240 guests
 Theater: 550 guests
 Classroom: 160 guests
 Reception: 400 guests

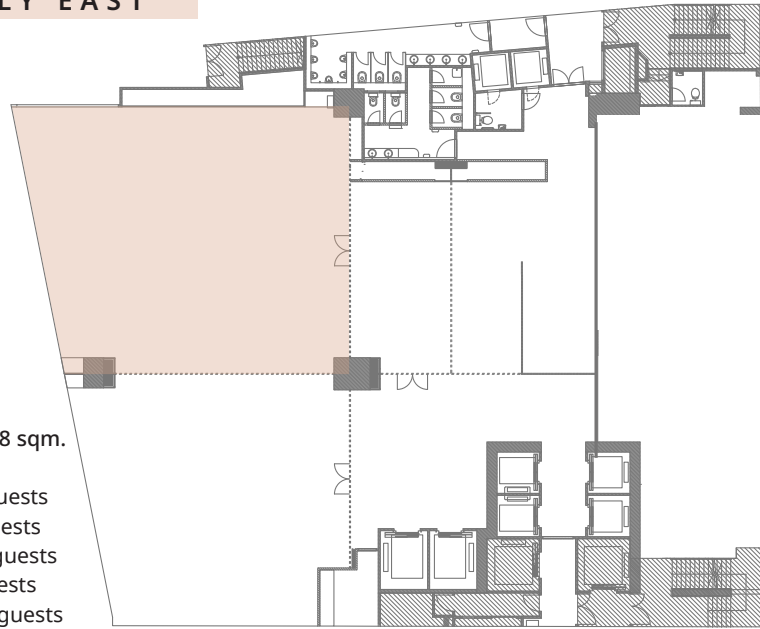


Venue	Area Ceiling	Ceiling	Banquet	Theater	Classroom	U-shape	Reception
Assembly L	5,400 sqft 503 sqm	2.8m	264	675	360	—	520
Assembly B	3,700 sqft 345 sqm	2.8m	144	475	—	—	430
Assembly M	3,900 sqft 366 sqm	2.8m	240	550	160	—	400
Assembly East	2,200 sqft 208 sqm	2.8m	120	260	80	60	200
Assembly West	1,700 sqft 158 sqm	2.8m	108	200	60	60	150
Assembly Central	500 sqft 46 sqm	2.8m	—	20	10	—	20

Max. capacity (pax) based on setting*

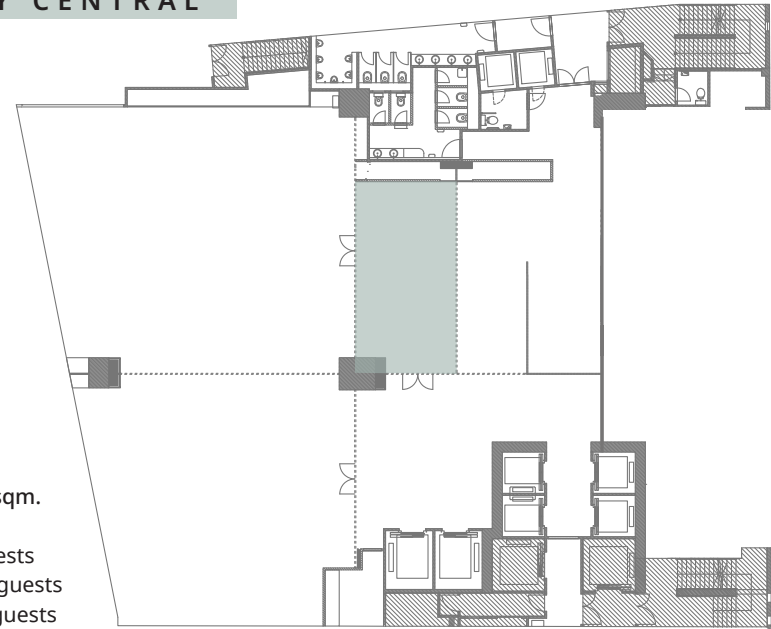
ASSEMBLY EAST

2,200 sq. ft / 208 sqm.
Capacity info
Banquet: 120 guests
Theater: 260 guests
Classroom: 80 guests
U-Shape: 60 guests
Reception: 200 guests



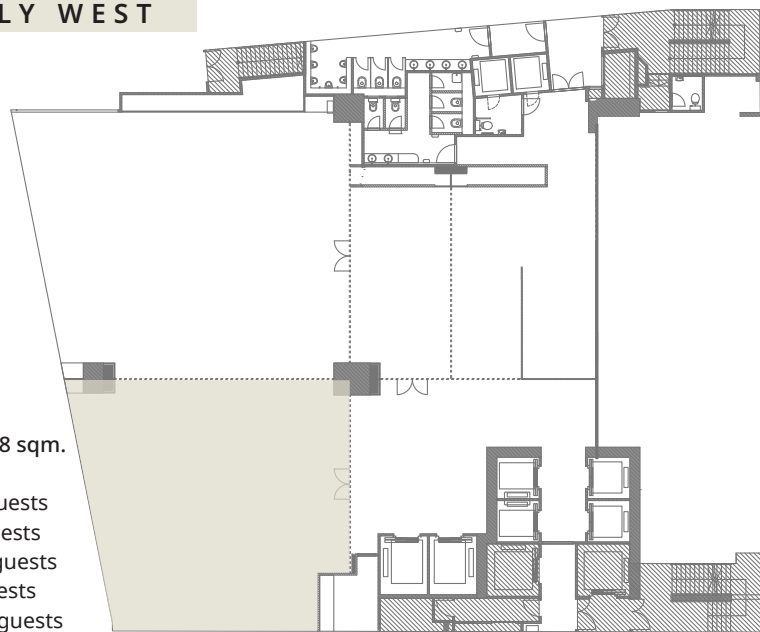
ASSEMBLY CENTRAL

500 sq. ft / 46 sqm.
Capacity info
Theater: 20 guests
Classroom: 10 guests
Reception: 20 guests



ASSEMBLY WEST

1,700 sq. ft / 158 sqm.
Capacity info
Banquet: 108 guests
Theater: 200 guests
Classroom: 60 guests
U-Shape: 60 guests
Reception: 150 guests



Max. capacity (pax) based on setting*